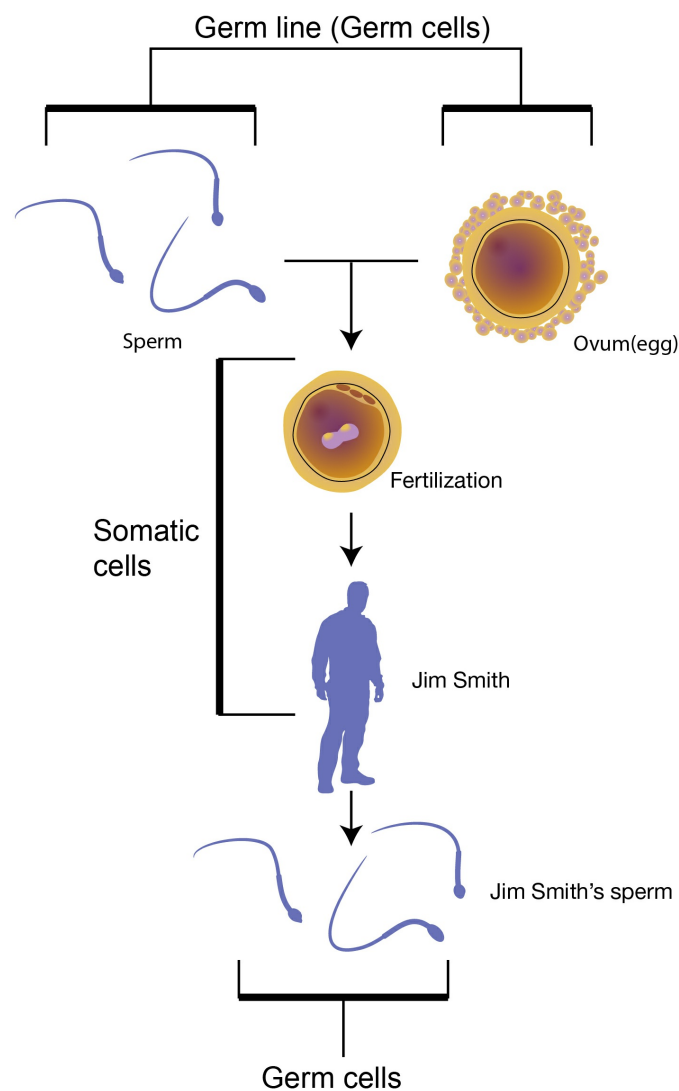


Somatic Cells

National Human Genome Research Institute (NHGRI)

Source

National Human Genome Research Institute (NHGRI). *Somatic Cells*.



A somatic cell is any cell of the body except sperm and egg cells. Somatic cells are diploid, meaning that they contain two sets of chromosomes, one inherited from each parent. Mutations in somatic cells can affect the individual, but they are not passed on to offspring.

