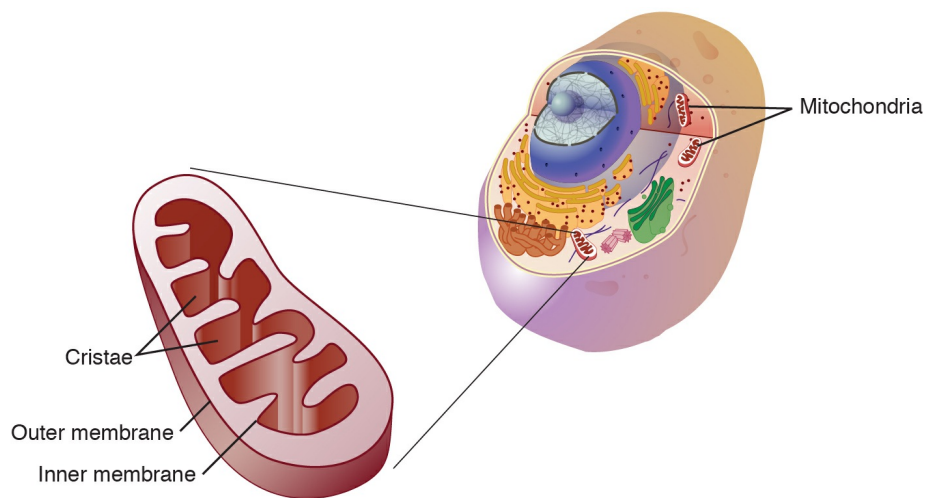


Mitochondria

National Human Genome Research Institute (NHGRI)

Source

National Human Genome Research Institute (NHGRI). *Mitochondria*.



Figure

Mitochondria are membrane-bound cell organelles (mitochondrion, singular) that generate most of the chemical energy needed to power the cell's biochemical reactions. Chemical energy produced by the mitochondria is stored in a small molecule called adenosine triphosphate (ATP). Mitochondria contain their own small chromosomes. Generally, mitochondria, and therefore mitochondrial DNA, are inherited only from the mother.