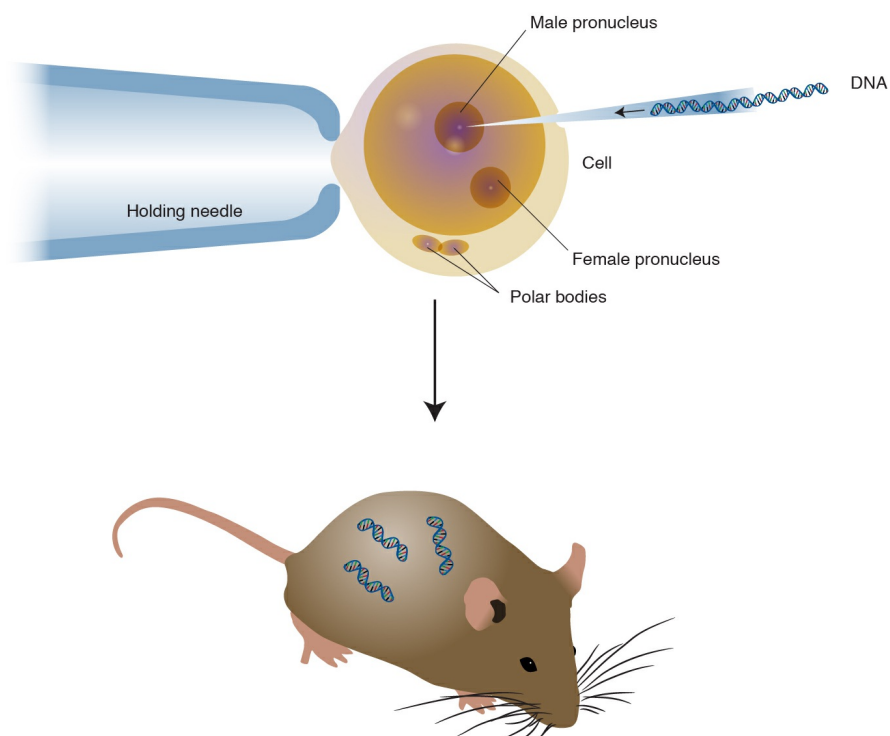


# Transgenic

National Human Genome Research Institute (NHGRI)

## Source

National Human Genome Research Institute (NHGRI). *Transgenic*.



Transgenic means that one or more DNA sequences from another species have been introduced by artificial means. Animals usually are made transgenic by having a small sequence of foreign DNA injected into a fertilized egg or developing embryo. Transgenic plants can be made by introducing foreign DNA into a variety of different tissues.